

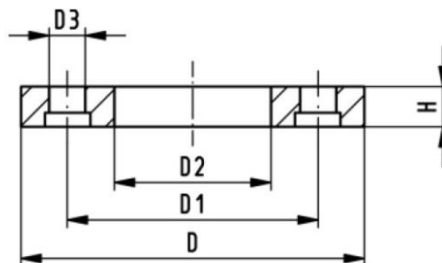


Description:

Backing ring for usage in Flexalen PB systems.

Technical details:

Material:	30% glass fibre reinforced PP with steel ring or full plastic 30% glass fibre reinforced
Dimensions:	O.D. 63 mm (2") – 315 mm (12")
Nominal pressure:	PN16 (150 psi)
PCD Pitch circle diameter:	ANSI/ASTM B 16.5 class 150, ASTM D 4024, BS 1560, BS EN 1759
Assembly:	Flange connection without any special tool; usage of nuts, bolts and washers (not supplied).



Product code	d [mm]	d ["]	weight [kg]	D [mm]	D1 [mm]	D2 [mm]	D3 [mm]	H [mm]	NH	Bolt	Bolt torque [Nm]
GP-LOSF63-16AS ¹	63	2	0.36	165	121	78	19	24	4	M16x 85	
GP-LOSF75-16AS ¹	75	2½	0.49	185	140	92	19	26	4	M16x 90	
GP-LOSF90-16AS ¹	90	3	0.61	200	152	110	19	27	4	M16x 90	
GP-LOSF110-16AS ¹	110	4	0.71	229	190	133	19	28	8	M16x 95	
GP-LOSF160-16AS ²	160	6		285	241	178	22	32	8	M20x 140	
GP-LOSF225-16AS ²	225	8	5.62	340	298	238	22	27	8	M20x 160	
GP-LOSF250-16AS ²	250	10	2.24	406	362	288	26	38	12	M20x 160	
GP-LOSF315-16AS ²	315	12	3.63	483	432	338	26	42	12	M20x 160	

¹ suitable for socket fusion

² suitable for butt fusion